



Alfold Road, Cranleigh, GU6 8NQ

The Ash at Amber Waterside

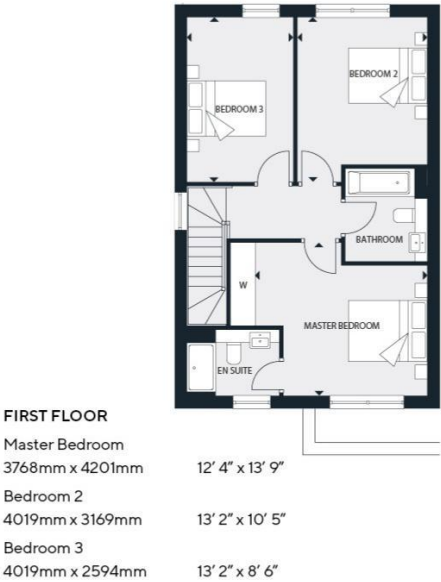
£585,000



1206 sq ft 3 bedroom 2 bathroom semi-detached home * Garage and driveway * Contemporary kitchen * Integrated appliances * Downstairs cloakroom * Utility area * Electric car charging point * Energy efficient home with an excellent B rating or above *

The Ash is a 3 bedroom semi-detached family home with garage. Featuring spacious open plan living, a contemporary kitchen with integrated appliances and stone work tops plus a single garage. On the first floor, there are 3 double bedrooms with an ensuite and build in wardrobes to the principal bedroom Amber Waterside is a collection of new homes in the charming Surrey market town of Cranleigh, perfectly positioned by the lakeside. Combine the light and space of contemporary interiors and energy efficient designs with an idyllic, sought-after location in England's largest village. Please note: The photos used are of the show home and are for indicative purposes only.

THE ASH
3 BEDROOM HOME
1206 SQ FT



HOUSES 12, 58, 90, 92
11, 24, 57, 89 ARE A MIRROR IMAGE.

* No garage to House 24

Important Notice: For clarification, we wish to inform prospective purchasers that these sales particulars have been prepared as a general guide. We have not carried out a detailed survey, nor tested any appliances, equipment, fixtures or services, so cannot verify that they are in working order, or fit for their purpose. Room sizes are approximate: They are taken between internal wall surfaces as indicated on the prepared floor plan.